

## TABLE OF CONTENTS



<b>About Us</b>	<b>2</b>
<b>Engraving Technology</b>	<b>4</b>
<b>Sign Technology</b>	<b>20</b>
<b>Laser Technology</b>	<b>22</b>
<b>Milling And Erosion Technology</b>	<b>26</b>
<b>Extras</b>	<b>30</b>

# BORNEMANN

STANDARDS IN PRECISION

Bornemann GmbH  
Feilenhauerstr. 2  
D-42929 Wermelskirchen  
Telefon +49 (0)21 96 / 70 67 - 0  
Telefax +49 (0)21 96 / 70 67 - 100  
[www.gravur.de](http://www.gravur.de)  
[info@gravur.de](mailto:info@gravur.de)



ENGRAVING TECHNOLOGY  
SIGN TECHNOLOGY  
LASER TECHNOLOGY  
MILLING AND EROSION  
TECHNOLOGY

No outsourced process steps.

From the planning to realization, your product remains

**IN-HOUSE PRODUCTION**  
with us.



**WELL TRAINED EXPERTS**  
Professional processing of your order with flexible scheduling  
is guaranteed in all areas of production.



**COMPREHENSIVE OFFERING**  
Diverse processing technologies and the correct  
material selection allow a wide range of products.



**DESIGN**  
We implement solutions using state-of-the-art  
CAD systems.



**HEAT TREATMENT**  
performed almost exclusively in-house.



We work according to the regulations of  
**QUALITY MANAGEMENT**  
DIN EN ISO 9002.



You can send us your drawings, sketches, black/white

documents, patterns, films and files on disk or by e-

**DATA EXCHANGE**

mail – we will use them to manufacture the tools you

require.

Inscribing of die blanks, forging dies, moulds, tools and  
**WAGE WORK**  
advertising articles through engraving or laser inscription.



Machine dies cannot be cataloged. These parts are manufactured according to your specifications. The flexibility arises from the various shapes and applications.

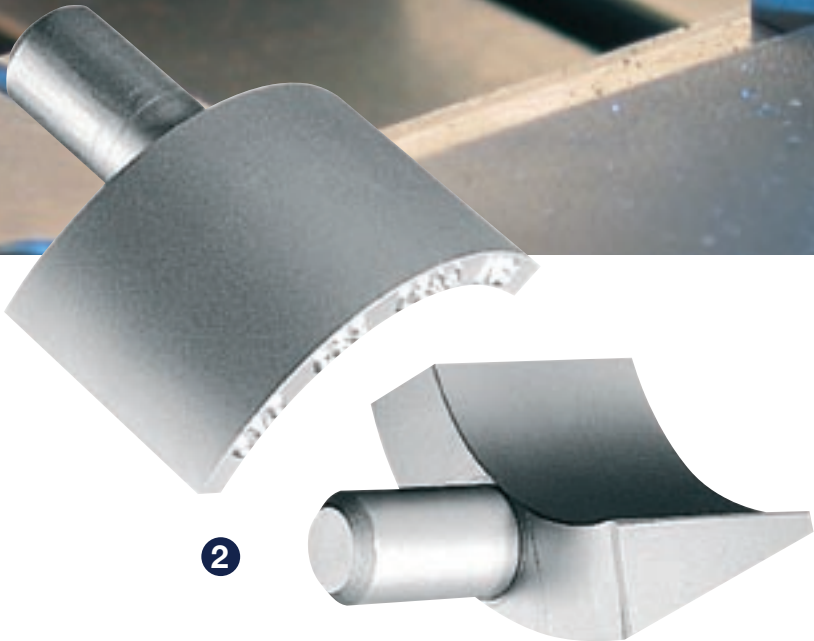
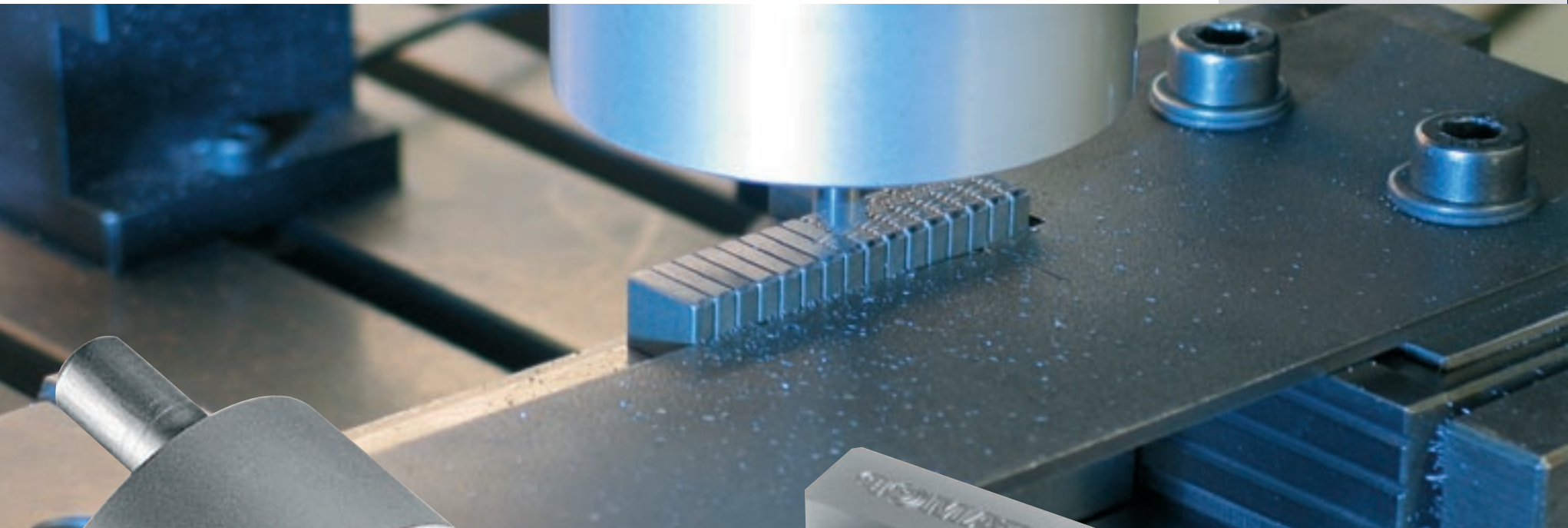
- 1 Machine dies in various designs
- 2 Journal dies that have been milled with various outer and inner radii
- 3 Machine coining dies of sintered metal for labeling

heat-treated parts

- 4 Double coining die for three-dimensional embossing of sheet metal and cardboard

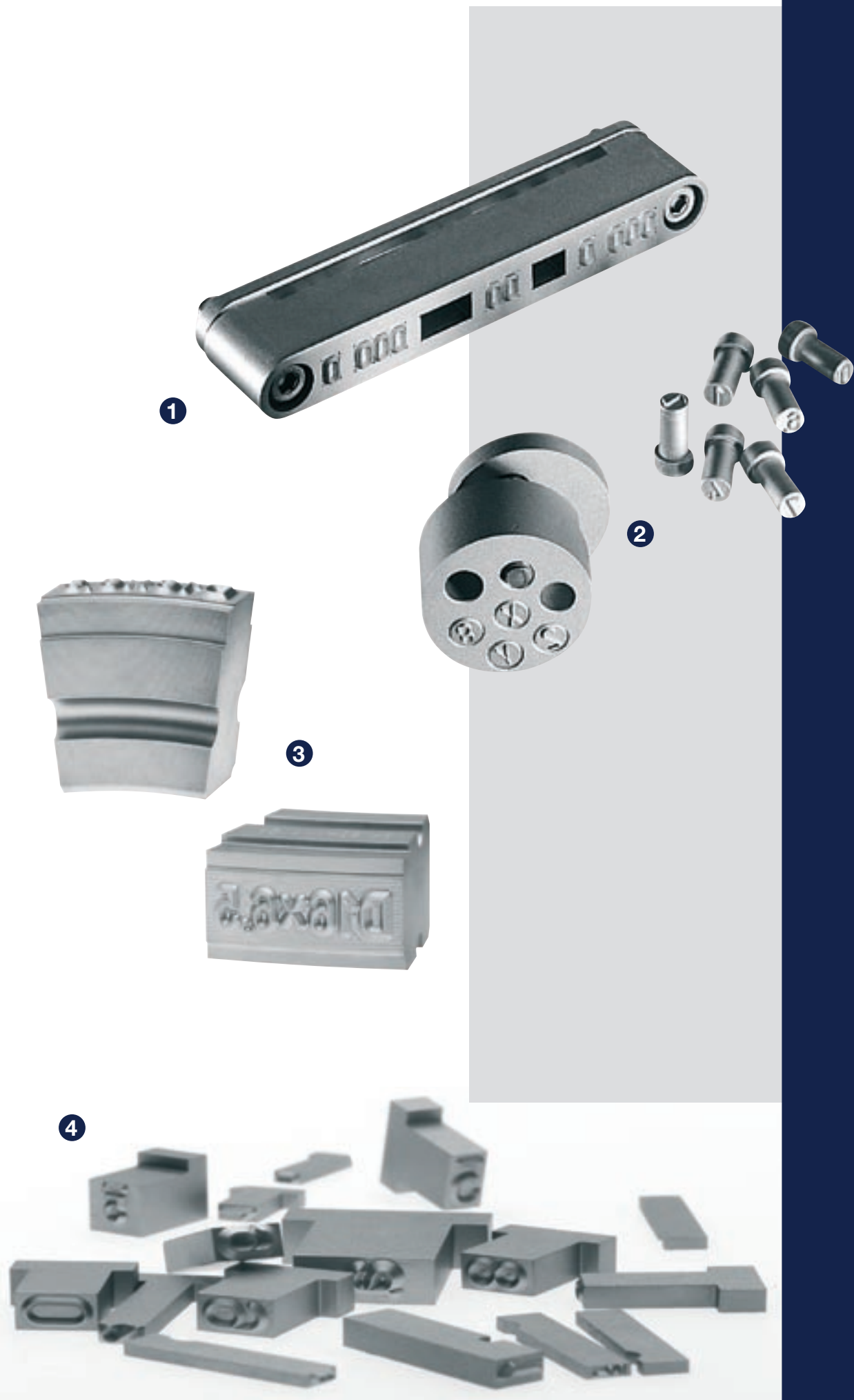
PRECISION FOR OPTIMAL FLEXIBILITY

# ENGRAVING TECHNOLOGY





# ENGRAVING TECHNOLOGY



Changing texts are efficiently combined with fixed standards.

Adaptations to existing conditions are properly taken into consideration.

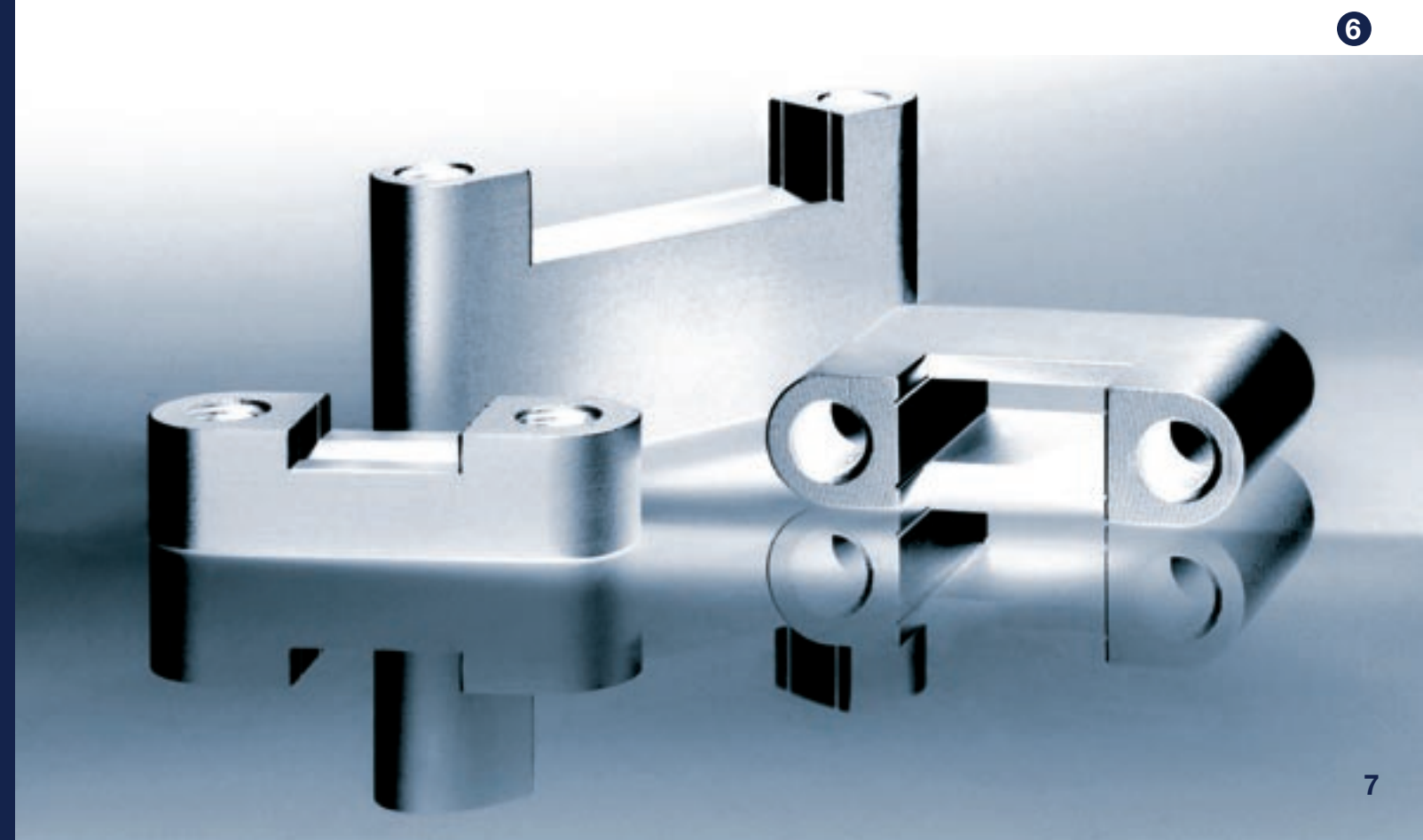
• 1 Individual type holder with eroded countersinking for labeling of stampings

• 2 Type holder in drilled design with die plate. • 3 Ring segment

## ACCURATE DRAWING TRANSFER

• 4 Stamping letters in various designs • 5 Roller die with changeable segments

for infinite stamping • 6 Standard type holders







# ENGRAVING TECHNOLOGY

Marking surfaces with important data, such as material designations, is of great importance with regard to a flawless QA system. The ability to make changes allows greater flexibility.

## IMPORTANT MARKINGS

- 1 Hand stamp for steel, tool and machine manufacture for easy marking
- 2 Wheel selection according to specifications
- 3 Combined machine type holder with stamping wheels
- 4 Hand type holder with changeable types and striking cap as well as pin lock and clamping screw
- 5 Machine stamp with peg or threaded hole for mounting onto a press





# ENGRAVING TECHNOLOGY

The complexity of manufacturing processes with maximum precision is the  
**INNOVATIVE COMPETENCE**  
basis for flawless products. Consideration of shape changes and subsequent

pressure finishing bring a product to absolute perfection.

- 1 Stamping and shaping die







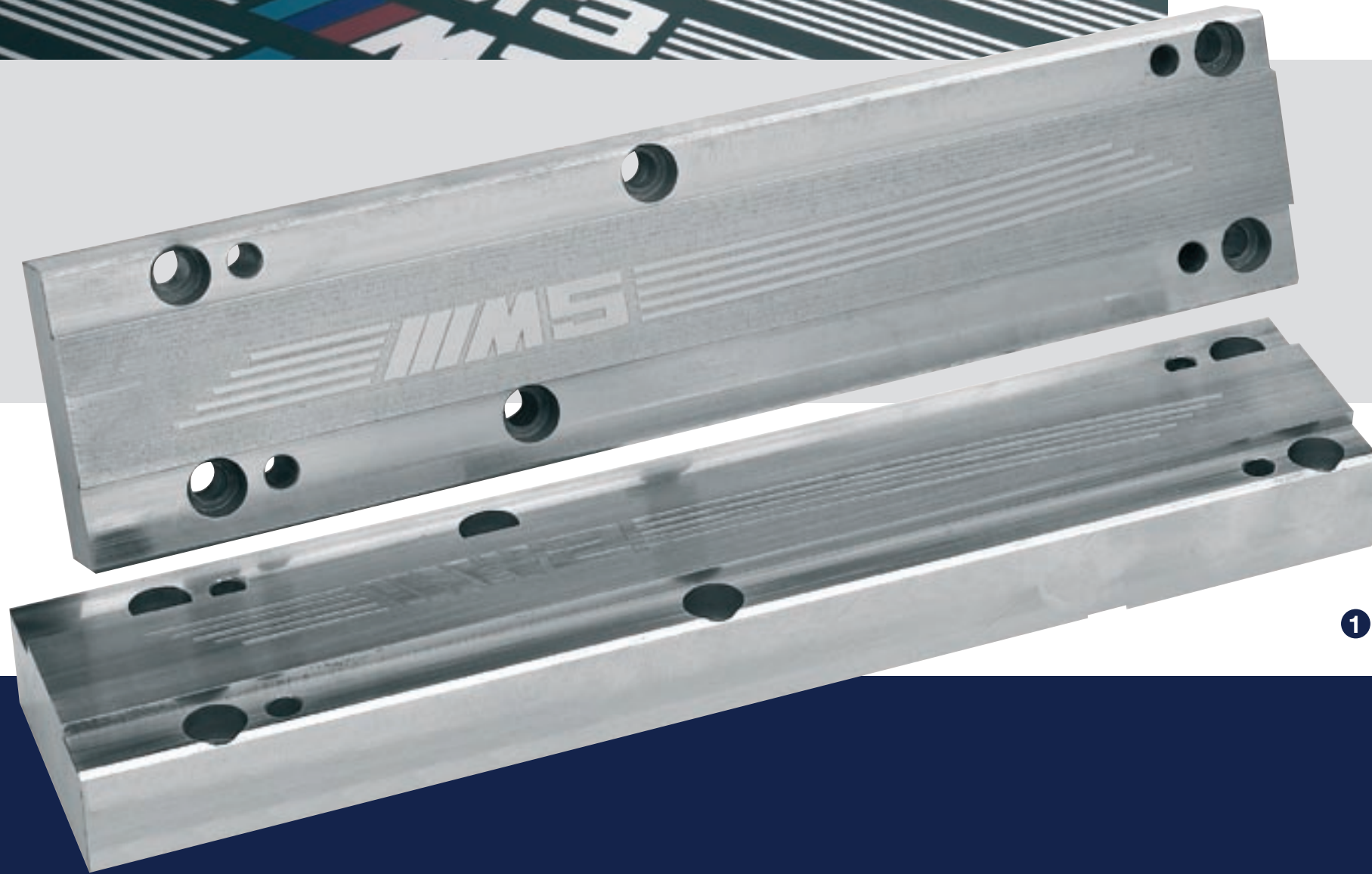
Attractive products result from elegance and perfect shape. A perfect

shape is achieved through great creativity and desire. The visual

**FOR MAXIMUM QUALITY**

recognition factor is an expression of timeless elegance. • 1 Dies for

producing a running board • 2 Gear shifting gate



# ENGRAVING TECHNOLOGY







1

The beauty of perfection for lasting imprinting or embossing in the  
**DISTINCTIVE FINISHING**  
 world of pressure and paper finishing. • 1 Printing block for

finishing of high quality packaging • 2 Brass block for hot stamping

of cork surfaces, leather and plastic as well as for stamping of

book bindings with crests and texts according to customer wishes

• 3 Film stamping die of low-warpage brass for stamping and

cutting self-adhesive films



# EMBOSSING TECHNOLOGY

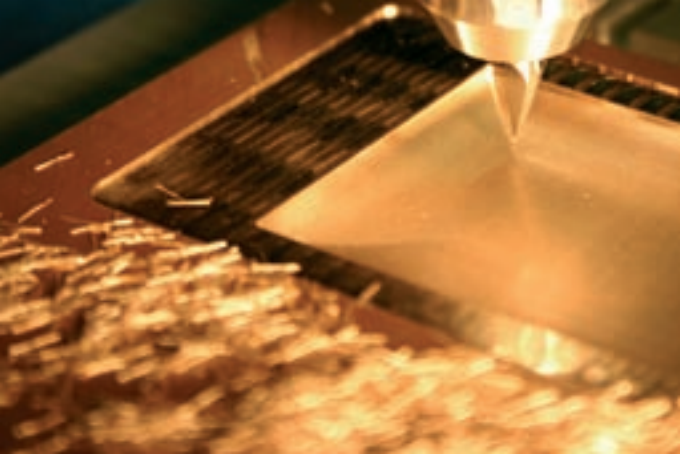


2



3





For optimizing the surfaces of your products, such as bands, envelopes and high-quality packaging.

## DISTINCTIVE TEXTURES

• 1 Texture stamping roller • 2 Blind tooling die of brass for exclusive private and business papers

• 3 Stamping pattern for leather seats • 4 Stamping wheels and rollers for individual imprinting

of leather belts, fabric and decorative bands

# ENGRAVING TECHNOLOGY



1



2



3



4





High-precision erosion, with sparks flying, yields a creative appearance and gives the impression that

contours have defined functionality. • 1 Mold electrode according to CAD data • 2 Labeling electrode of

copper for the plastic industry • 3 Cutting die made with wire EDM according to DIN EN ISO standards

## VISIBLE PRECISION

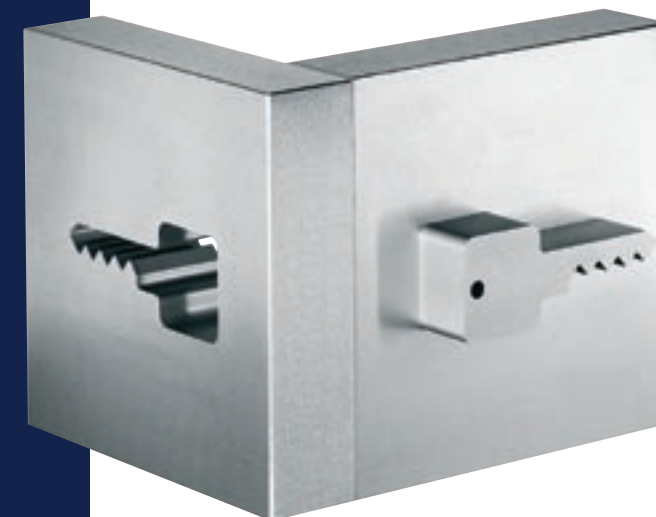
• 4 Copper electrode for model production of hinges in the automotive industry • 5 Graphite electrode for

the plastic and metal industry

2



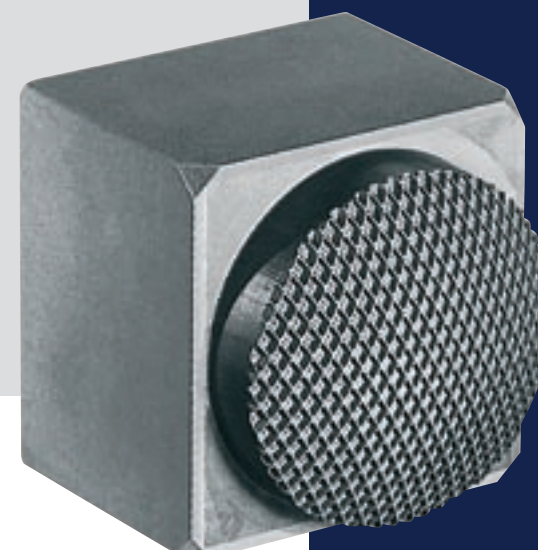
3



4



5

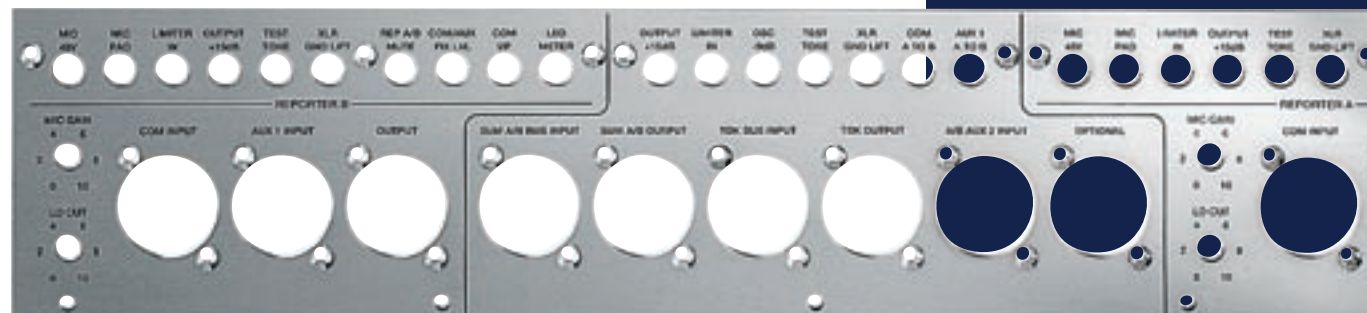


1



# ENGRAVING TECHNOLOGY

1



# SIGN TECHNOLOGY

Visible displays with an eye for the essentials and clear design based on a

wide range of manufacturing options. • 1 Aluminum front panel • 2 Printed

sign with continuous laser inscription • 3 For rulers, division into degrees,

## PERFECT APPEARANCE

millimeters or inches is possible • 4 Scale segment • 5 Brass sign • 6 Your

individual sign as an eye catcher for exhibits, advertising and fairs; of various

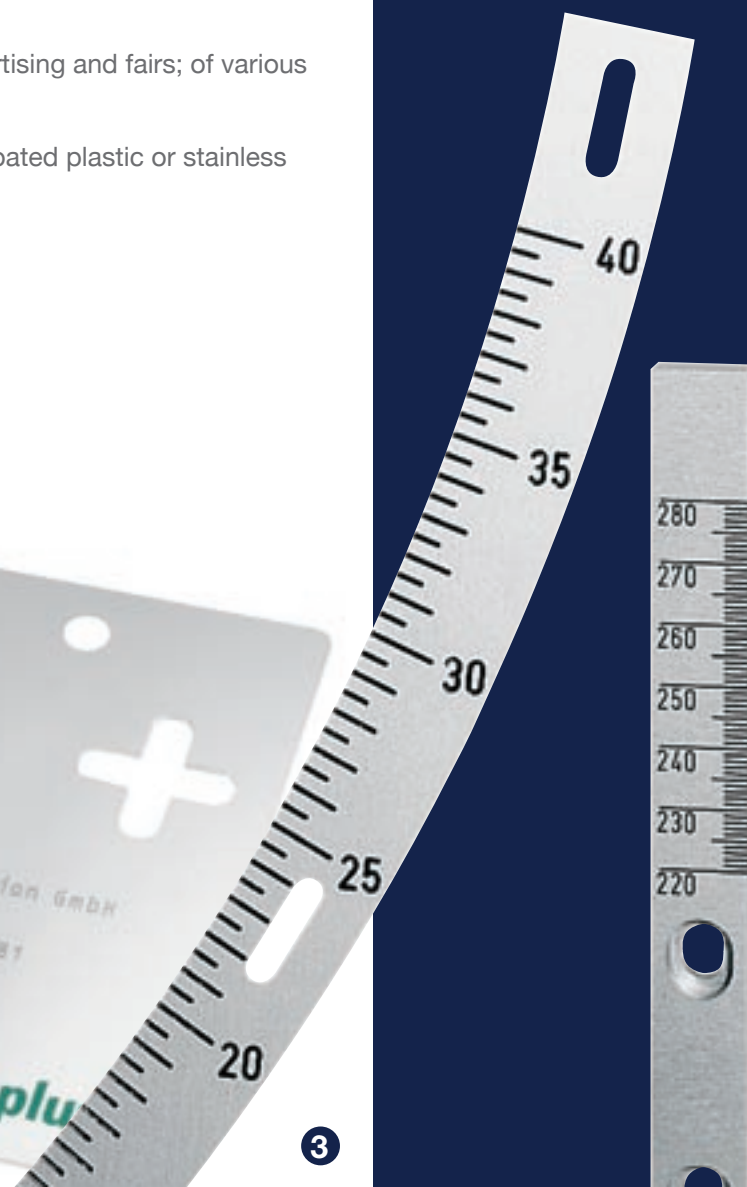
materials, such as Plexiglas, acrylic glass, glass, coated plastic or stainless

steel • 7 Type plate

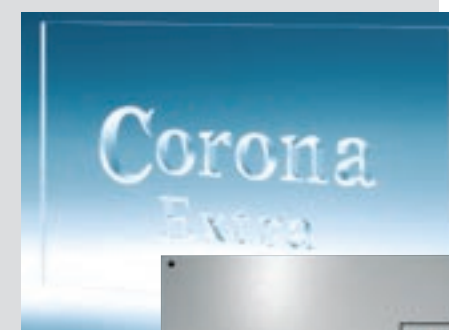


2

3



5



6



7



4







1



2



# LASER TECHNOLOGY

Lasting impressions with original flair and appealing quality – for

advertising and display. Laser inscription offers a wide spectrum of

options for individually adding texts, names and logos to advertising

## PRODUCT-ORIENTED SOLUTIONS

articles. We can process sources such as letterheads, films, files or

CDs. Inscription with no physical contact has the advantage that the

part being inscribed does not have to be clamped in place. It is also

possible to apply an inscription to even inaccessible areas.

• 1 Advertising inscription • 2 Elegant hinge of a shower booth door

• 3 Eye catcher for fair appearance, advertising in display windows or

offices



1



3



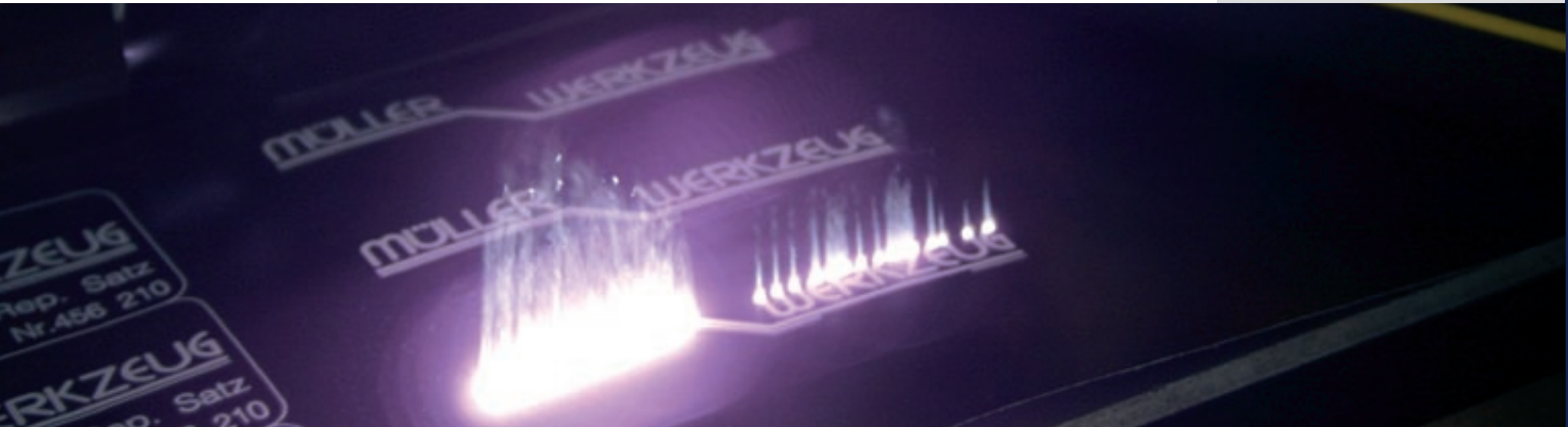
Functionality with clear origins and high recognition factor. All materials can be  
**FOR MAXIMUM QUALITY**  
inscribed with our laser systems. • 1 Film inscription • 2 Laser inscription on

plastic insert • 3 Tool inscription • 4 Deep engraving for tools and work pieces



# LASER TECHNOLOGY

1



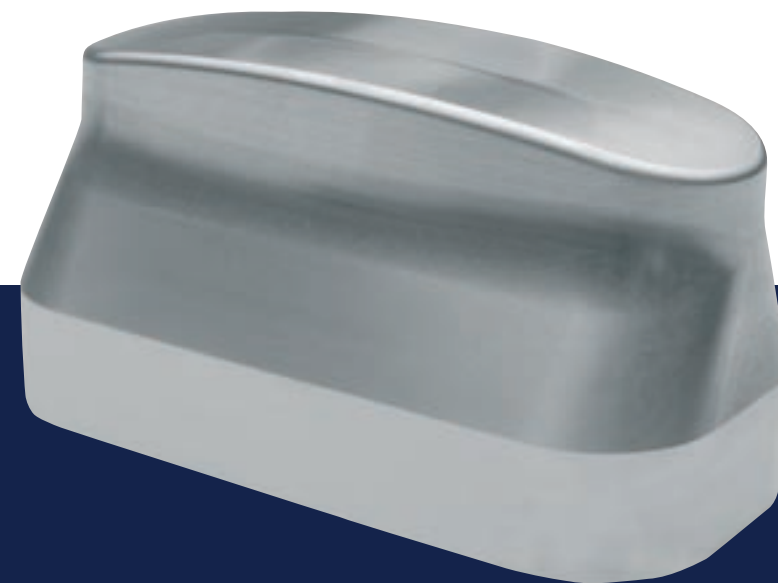
4



3







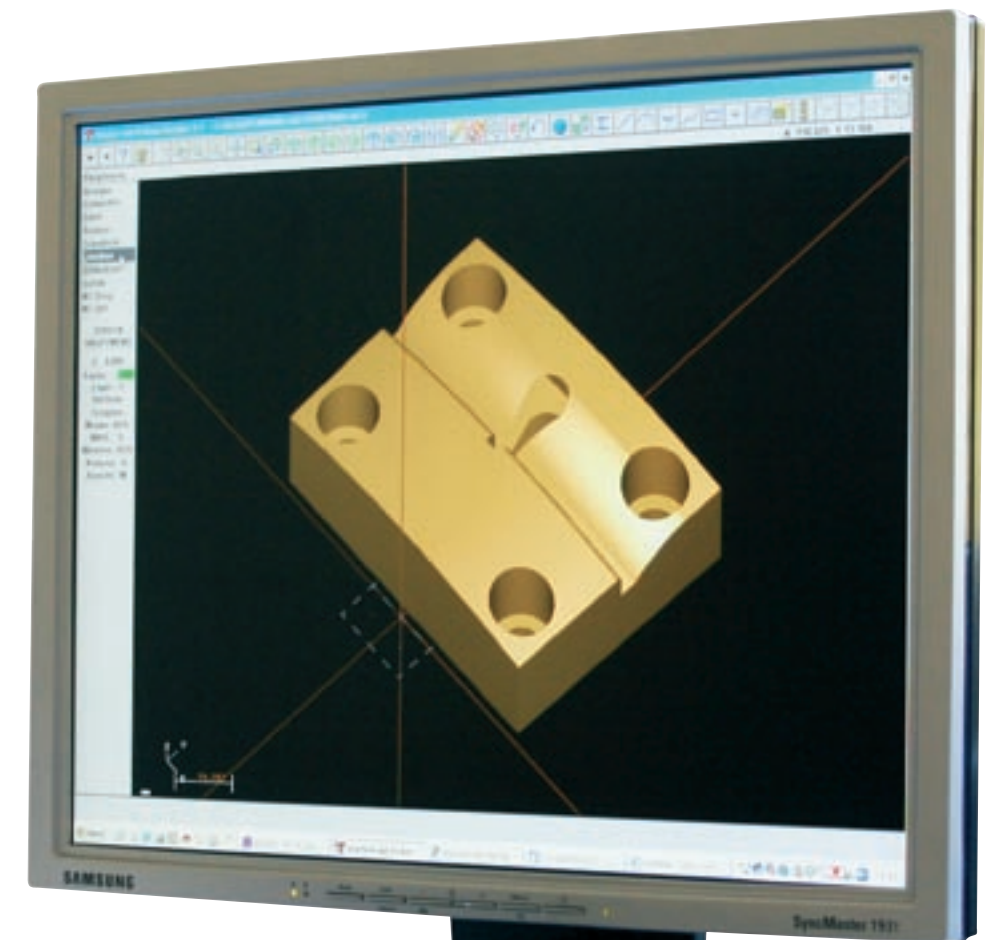
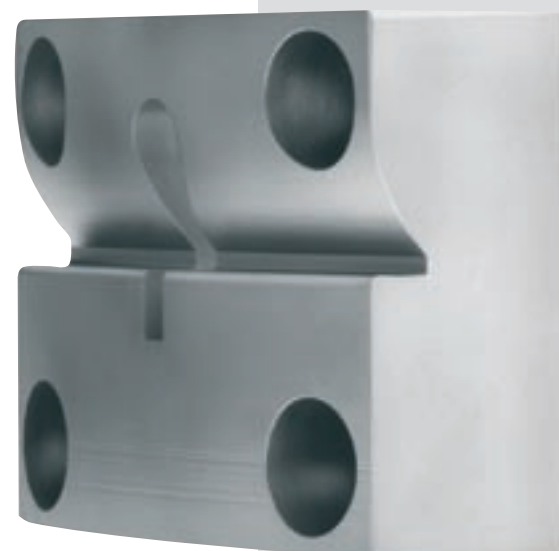
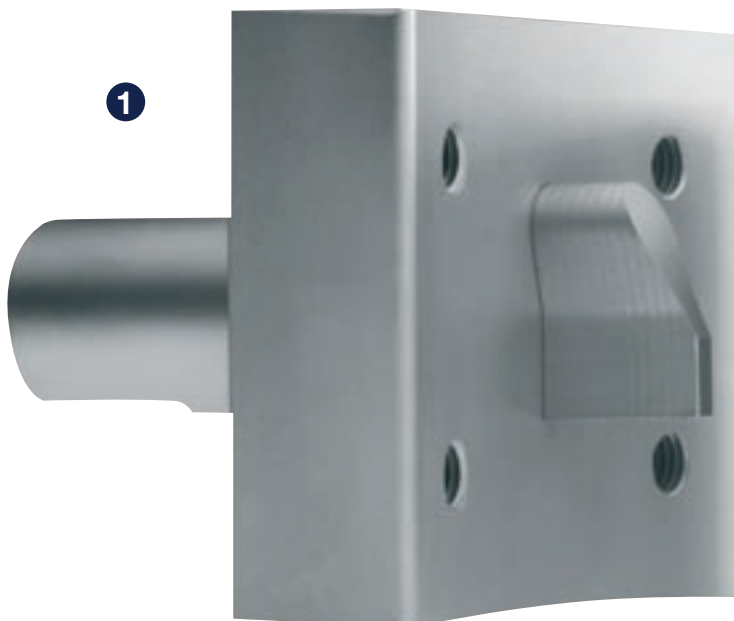
# MILLING AND EROSION TECHNOLOGY

The realization of a vision of perfect tools and precision. State-of-the-art technology brings perfection into reach.

## HIGH-TECH DESIGN

• 1 Precision punching dies • 2 Shaping die

1



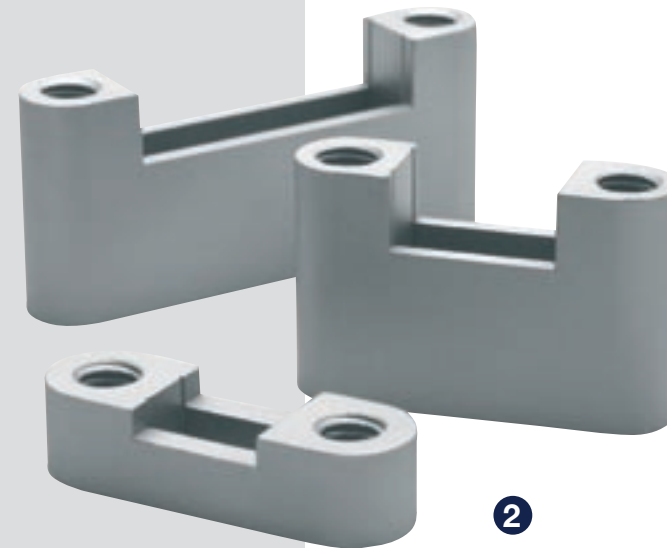


Precise tools and implementation know-how for accurate manufacturing.

## INDIVIDUAL SHAPING

• 1 Base jaw • 2 Type holder • 3 Die adjustment device • 4 Die gripper

• 5 Bottom die



# MILLING AND EROSION TECHNOLOGY







# EXTRAS

The depth and variety of individual manufacturing is the expression of a compact offering with perfect hand tools. • 1 Lead sealing tongs in polished or nickel-plated design. These tongs are used for sealing objects such as power meters and fire extinguishers. The seals can be given an individual engraving.

• 2 Rubber stamp for everyday use in the office • 3 Seal stamp of brass for government offices, authorities and private individuals • 4 Hand punch of tool steel for marking steel, iron, brass, wood, leather or hard

rubber with individual letters or company logos • 5 Advertising dummy for film productions • 6 Electric branding stamp with alternating voltage regulator





## NOTES

[illegible]

**Imprint:**

**Bornemann GmbH**

## Signiertechnik

Feilenhauerstr. 2

D-42929 Wermelskirchen

Tel. +49 (0)21 96 / 70 67 - 0

Fax +49 (0)21 96 / 70 67 - 100

info@gravur.de

www.gravur.de

Geschäftsführer: Michael Wisniewski

Handelsregister: HRB Wuppertal 11445

Ust.-Ident.-Nr.: DE 811262535

**Design, Photography, Artwork**

## STUDIO 310, Annabelle Schleder

Merscheider Str. 164

D-42699 Solingen

info@studio310.de

www.studio310.de

© STUDIO 310 und

Bornemann GmbH Signiertechnik

All rights reserved.

Use or reprinting of texts and

diagrams – even in excerpts –

is permitted only with our written

approval. This applies in particular

to reproduction, translation or use

in electronic systems.